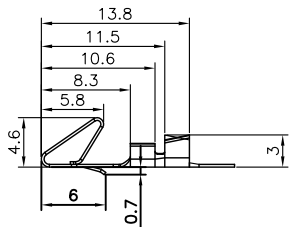


REV.	DESCRIPTION	DRAWN	CHECKED	APPROVED
A	NEW RELEASE	LL 10/09/06	~	LJC 10/09/06
B	增加pin数方向	LL 12/21/06	~	LJC 12/21/06
C	ADD P/N CODE	JLZ 01/30/15'	~	

Female Terminal

T-DS1072- S C 6 0 0

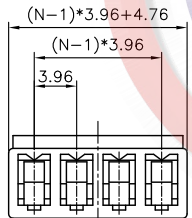
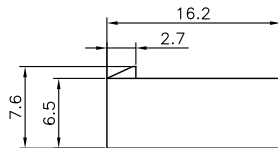


Contact Plating
6: Tin

Female Terminal

Wire Range	O.D of Wire	
Section Area (mm ²)	AWG#	mm
0.2~0.75	24~18	1.3~2.8

Female Housing



I-DS1072- S C T 0 X

No. of contact
02~13

NOTES:

1. MAIN SPECIFICATIONS

- . Housing material: NYLON 66
- . Wire range: AWG#24~#18
- . Rated voltage: 250V
- . Rated current: 3A
- . Contact resistance: ≤ 30mΩ
- . Insulation resistance: ≥ 1000MΩ
- . Withstanding voltage: 500V,AC 1 minute
- . Temperature range: -25 ~ +85°C
- . Recommend PC board thickness:1.6mm

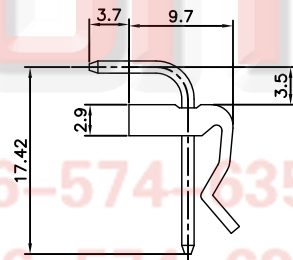
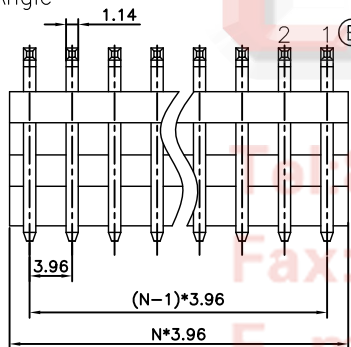
2. PRODUCT NUMBER CODE:

DS1072 -

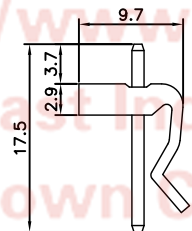
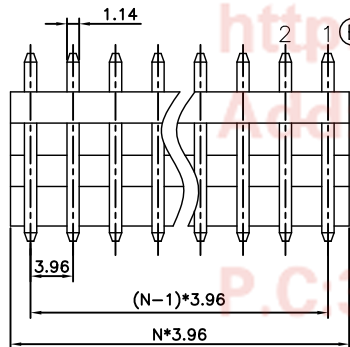
X X X X X

- Contact Plating
6: Tin
8: Full gold flash
- Housing Color
T: Transparent
- Mounting type
R: Right Angle
V: V/T type
- Connector type
M: Male
- No. of contact
2 to 13

Male Right Angle



Male V/T TYPE




N=No. of contacts

GENERAL TOLERANCE		ANGLE TOLERANCE	
X.	±0.60	X.	±5°
.X	±0.38	.X	±3°
.XX	±0.25	.XX	±2°

DRAWING TYPE	CUSTOMER		
SCALE	1:1	SHEET	1 OF 1
DRAWING NO.	C-DS1072-XXXXX-C		

PROJECTION	TITLE
UNITS	P.C.B CONNECTOR Pitch 3.96mm
SHEET SIZE	SERIES DS1072 SERIES

 **晨翔电子有限公司**
CONNFLY CONNFLY ELECTRONIC CO. LTD